



# Stir/Shaken

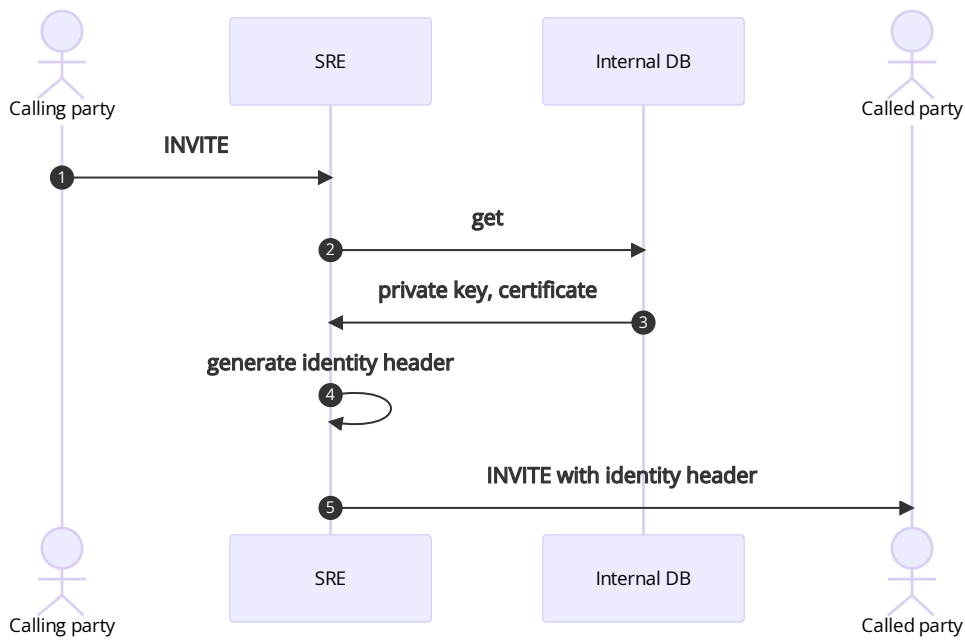
Technical Note

## Table of Contents

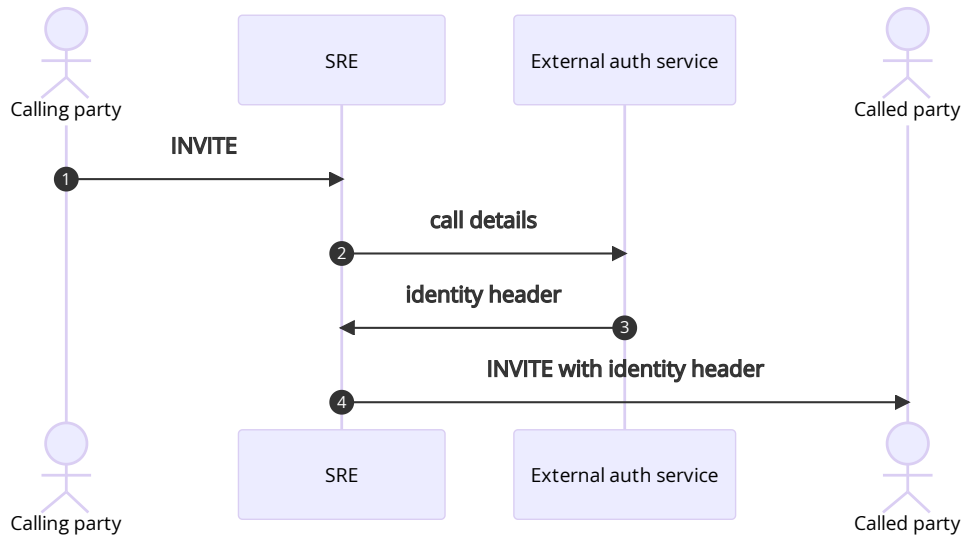
<b>1 Scenario</b>	<b>1</b>
1.1 SRE as originating proxy and authentication service . . . . .	1
1.2 SRE as originating proxy interfacing auth-service via HTTP . . . . .	2
1.3 SRE as standalone authentication service . . . . .	3
1.4 SRE as terminating proxy and verification service . . . . .	4
1.5 SRE as terminating proxy interfacing verification via HTTP . . . . .	5
1.6 SRE as standalone verification service . . . . .	6

## 1 Scenario

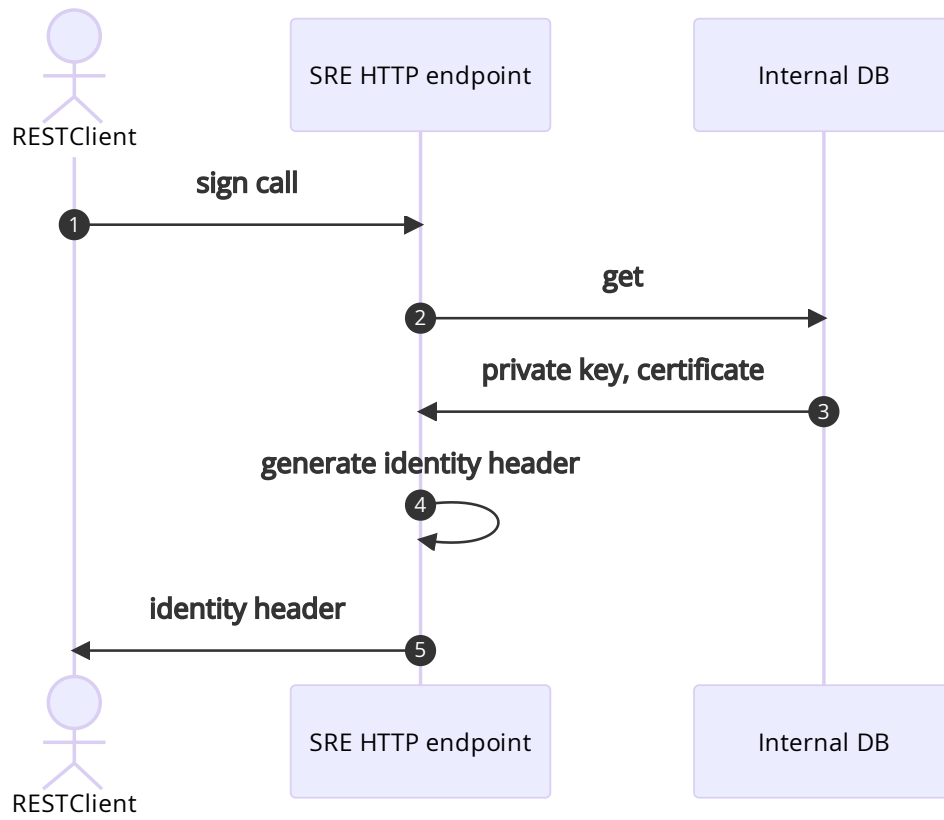
### 1.1 SRE as originating proxy and authentication service



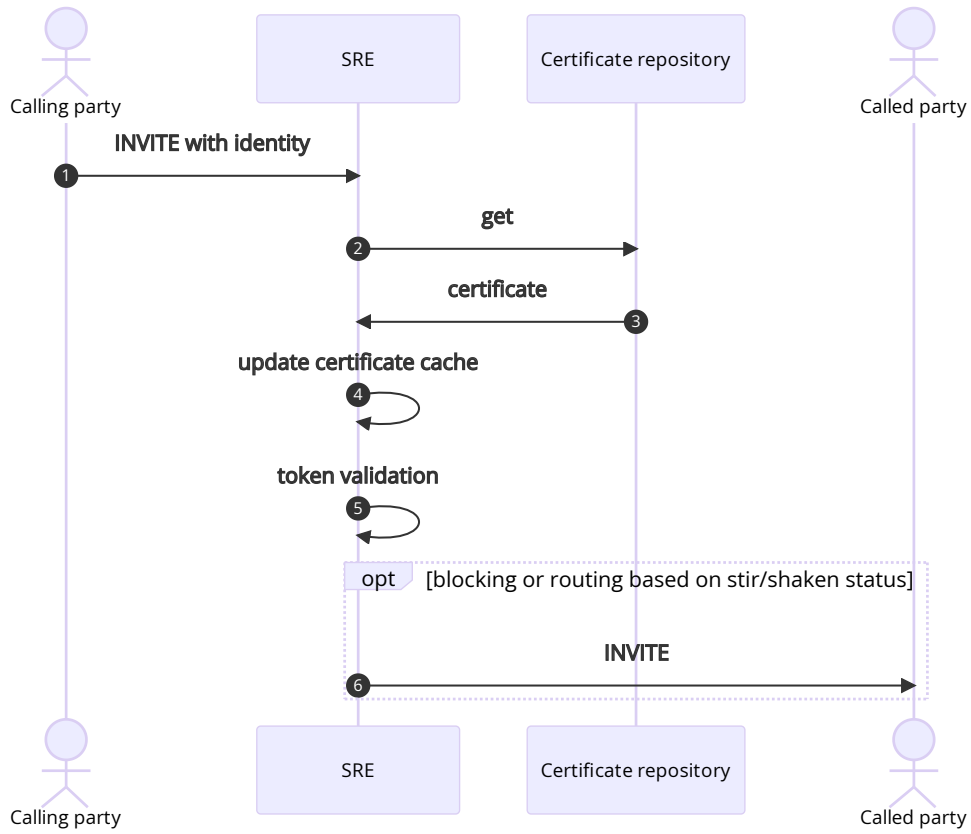
## 1.2 SRE as originating proxy interfacing auth-service via HTTP



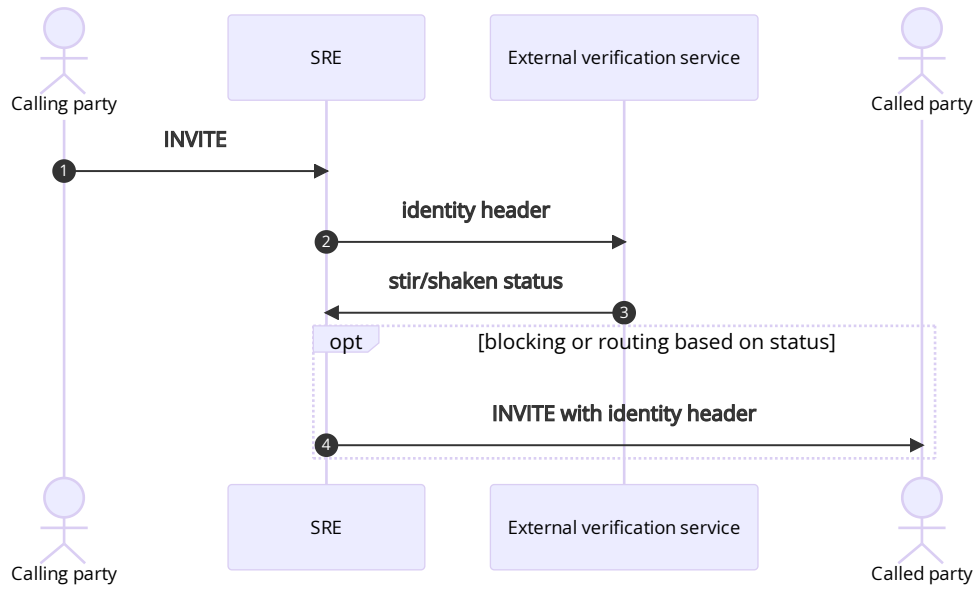
### 1.3 SRE as standalone authentication service



### 1.4 SRE as terminating proxy and verification service



### 1.5 SRE as terminating proxy interfacing verification via HTTP



### 1.6 SRE as standalone verification service

